

TELEDYNE CONTINENTAL[®] AIRCRAFT ENGINE

SERVICE BULLETIN

Compliance Will Enhance Safety

SB01-5

TECHNICAL PORTIONS
FAA APPROVED

SUBJECT: STARTER ADAPTER BEVEL GEAR INSPECTION

PURPOSE: To Advise FBO's, Owners, Operators and Engine and Accessory Overhaul Shop of Required Inspection of P/N 632617 Bevel Gear Installed in P/N 646220A38 Starter Adapter Assemblies.

COMPLIANCE: Initial inspection required within the next 25 hours of engine operation. Repetitive inspections required at 50 hour intervals until gear P/N 632617 is replaced with gear P/N 655919, or starter adapter P/N 646220A54 or subsequent is installed.

MODELS

AFFECTED: Factory New and Rebuilt IO-360-C, CB, G, GB, LB engines listed by engine serial number in Table 1 on page 2. Any of the above engines models that have had a new, rebuilt or overhauled starter adapter P/N 646220A38 installed as a replacement and all service spare bevel gears P/N 632617.

GENERAL INFORMATION:

Starter adapter assemblies P/N 646220A38 purchased from TCM from August 1998 to present are affected by this service bulletin. Starter adapter assemblies P/N 646220A38 that have been overhauled in the field and gear P/N 632617 installed are also affected by this service bulletin.

INSPECTION:

For affected engines listed in Table 1 and engines with field repaired or overhauled starter adapter P/N 646220A38 that utilized bevel gear P/N 632617; within the next 25 hours of engine operation perform a visual inspection of bevel gear P/N 632617 for spalling as outline below. Repeat this inspection at 50 hour intervals until starter adapter P/N 646220A38 is replaced with current production starter adapter P/N 646220A54.

1. In accordance with the aircraft manufacturer's instruction gain access to the engine and specifically the engine accessory area.
2. Referring to Figure 1, remove the "T" drive cover plate P/N 633751, by removing 4 each screws, 4 each lock washers and 4 each flat washers. Remove gasket P/N 653743.
3. Visually inspect bevel gear P/N 632617 for indication of gear tooth distress, spalling, broken or chipped gear teeth. Inspect interior of "T" drive housing for gear debris.
4. If visual inspection DOES NOT reveal any damage to bevel gear P/N 632617 and there is no gear debris noted in "T" drive housing interior reinstall cover P/N 633751 using a new gasket P/N 653743 and new lock washers P/N MS35338-44. Torque screws P/N 535631 to 75 to 85 inch pounds.
On completion of the above inspection, complete the owner notification form and mail it or fax it to TCM. ①

ISSUED			REVISED			 CONTINENTAL MOTORS <small>A Teledyne Technologies Company</small> <small>P.O. BOX 90 MOBILE ALABAMA 36601 • 334-438-3411</small>	PAGE NO	REVISION
MO	DAY	YEAR	MO	DAY	YEAR		1 of 4 SB01-5	
10	18	2001						

5. If visual inspection reveals damage to bevel gear P/N 632617 or if there is debris in the interior of the "T" drive housing the starter adapter assembly will have to be removed for repair or replacement. Contact TCM Technical Service Support at 1-888-826-5465

REPLACEMENT:

To place an order for an exchange starter adapter assembly Contact TCM Customer Support Center, Fairhope, AL at 1-888-200-7565. Have available the information requested on the Compliance Form on page 4.

Bevel gear P/N 632617 is being replaced with bevel gear P/N 655919. Bevel gear P/N 655919 will be available the end of September 2001. TCM will, on an exchange basis, replace all starter adapters affected by this Service Bulletin once gear P/N 655919 is available. In the event an affected P/N 646220A38 starter adapter assembly requires replacement prior to bevel gear P/N 655919 being available, TCM will as an interim action supply a P/N 646220A38 starter adapter assembly.

Starter adapters P/N 646220A38 will be replaced with starter adapter P/N 646220A54 when they become available. Service spare bevel gear P/N 632617 will be replaced by bevel P/N 655919. During field repair of overhaul bevel gear P/N 655919 must be used with gear P/N 640802. Refer to Figure 2.

WARRANTY:

Teledyne Continental Motors will reimburse the owner/operator or FBO the invoiced cost of a replacement Factory Rebuilt starter adapter assembly upon receipt of the removed, affected starter adapter assembly at Teledyne Continental Motors.

Service spare bevel gears P/N 632617 in Distributor inventory will be exchanged for P/N 655919 bevel gear. No requests for return credits will be accepted.

Warranty labor coverage will be as follows:

One (1) man hour labor per engine for visual inspection.

Four (4) man hours labor for starter adapter removal and installation on front engine.

Six (6) man hours labor for starter adapter removal and installation on rear engine.

Return the removed starter adapter assembly to: TCM Customer Support Center
Fairhope Municipal Airport
8600 County Road 32
Fairhope, AL 36532

TABLE 1

ENGINE MODEL	SERIAL NUMBER AFFECTIVITY
IO-360-C	060687 thru 060699, 060702 thru 060707, 060709 thru 060713, 060716
IO-360-CB	236527 thru 236532
IO-360-G	244609 thru 244619, 244621 thru 244634, 244636 thru 244639
IO-360-GB	352971 thru 352974, 813014 thru 813027, 813029 thru 813031, 813034 thru 813039
IO-360-LB	No Factory New or Rebuilt Engines Affected

ISSUED			REVISED			 CONTINENTAL MOTORS <small>A Teledyne Technologies Company</small> <small>P.O. BOX 90 MOBILE ALABAMA 36601 • 334-438-3411</small>	PAGE NO	REVISION
MO	DAY	YEAR	MO	DAY	YEAR		2 of 4 SB01-5	
10	18	2001						

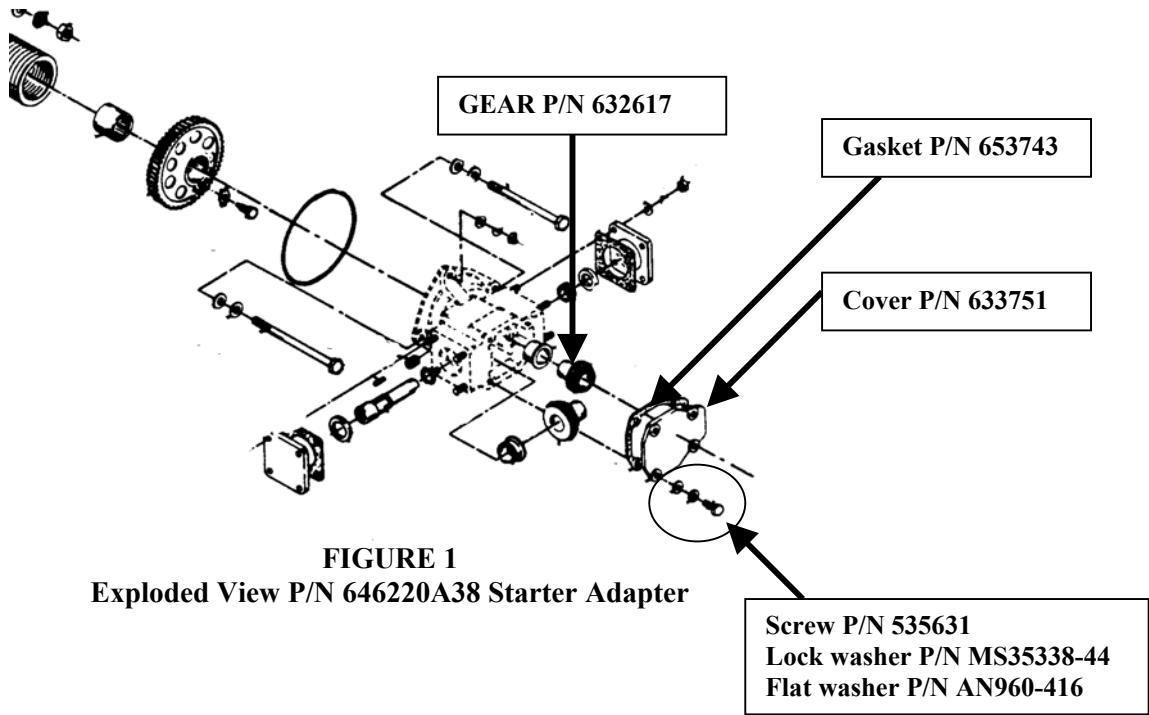


FIGURE 1
Exploded View P/N 646220A38 Starter Adapter

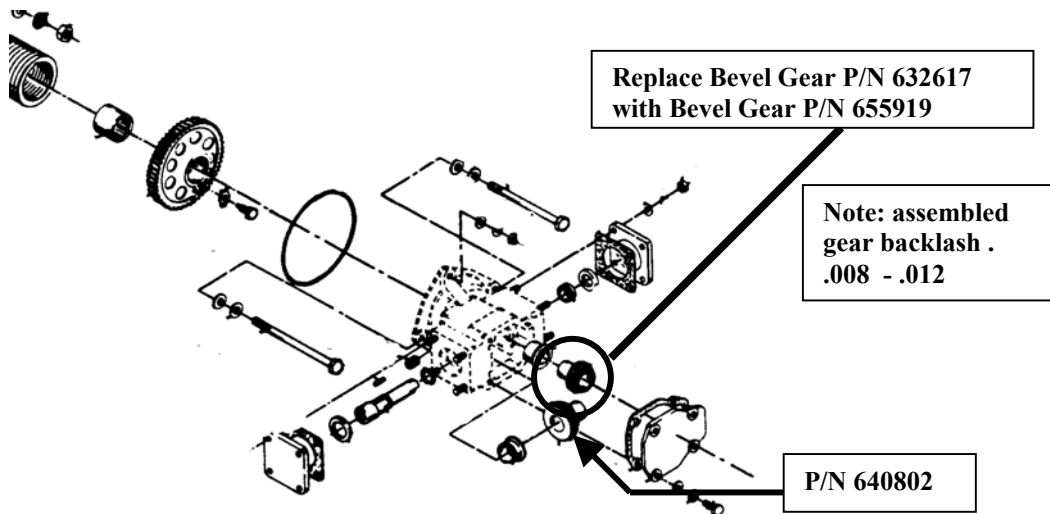


FIGURE 2
Exploded View P/N 646220A54 Starter Adapter

ISSUED			REVISED			 CONTINENTAL MOTORS <small>A Teledyne Technologies Company</small> <small>P.O. BOX 90 MOBILE ALABAMA 36601 • 334-438-3411</small>	PAGE NO	REVISION
MO	DAY	YEAR	MO	DAY	YEAR		3 of 4 SB01-5	
10	18	2001						

**COMPLIANCE FORM
SB 01-5**

Owner Name:		Aviator Services Membership #:		Date:
Address:				
City:		State/Country:		Zip Code:
FBO Name:		FBO Services Membership #:		Date:
Address:				
City:		State/Country:		Zip Code:
Aircraft Registration #:		Make/Model:		S/N:
Engine Model:		Serial Number:		Position: F - R - S
Date Installed:		Time Since Major O/H:		Time Since Top O/H:
Engine Model:		Serial Number:		Position: F - R - S
Date Installed:		Time Since Major O/H:		Time Since Top O/H:
Comments:				

① Mailing address: Teledyne Continental Motors or Fax number: 251(334)-433-2325
P.O. Box 90 Attn: Bob Robbins or Richard Suk
Mobile, Alabama 36601

ISSUED			REVISED			PAGE NO	REVISION
MO	DAY	YEAR	MO	DAY	YEAR		
10	18	2001				4 of 4 SB01-5	



CONTINENTAL MOTORS
A Teledyne Technologies Company
P.O. BOX 90 MOBILE ALABAMA 36601 • 334-438-3411